



custom house MARITIMES SUMMER 2025

Picturing Us at the Beach: *Vintage Photography in the Studio and on the Sand*, from the collection of Lisa Kereszi, on view at the Custom House through October, 2025.



Summer's Mementos from the director

Everybody loves snapshots -- people have cherished their holiday photos since the days when photography was something new. Photographer **Lisa Kereszi's** collection of late 1800s tintypes, now on view at the museum, shows how in the days before personal cameras beachgoers could stop at a tintype photo studio set up on the boardwalk to get their beach souvenir: *Here we are at the beach!* -- photographed before a painted beachy backdrop! *See above.*

We are offering you a rare opportunity on September 6, when artist **Greg Shea** sets up his photo studio at the Custom House. **It's a chance to have your own original tintype portrait done** -- with sailor caps or none! *Details for how to register are on page 3.* Meanwhile we have two selfie set-ups inside the museum where you can create your own portraits at any time, as the Kereszis did, *photo left.*

After last year's long summer of preservation work, it's terrific to be able to bring visitors out again to Ledge Light. Summer intern **Isabella Portella** organized the tours, which run into September (details on page 2).

A **Ludwick Family** grant will allow us to replace Race Rock's unsafe railing in durable stainless steel. We're now raising the funds to install it, and as I type, we are still \$17,000 short. *Please help if you can:* <http://gofund.me/b7c4cd2>.

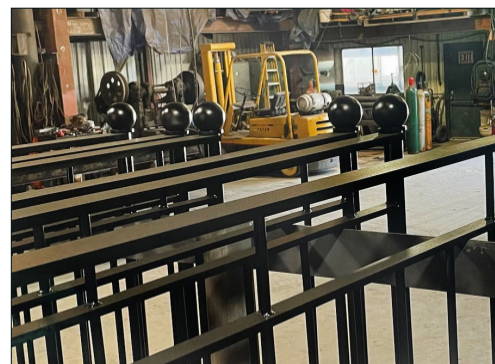
--Susan Tamulevich



Photos from top: Lisa Kereszi and family pose before a painted backdrop by volunteer Felix Orlando. Eastern Connecticut State University student Isabella Portella was our Elevate+ sponsored summer intern. She has planned and run tours, painted one gallery, & guided visitors through the Custom House-- all in a day's tasks for a museum worker.



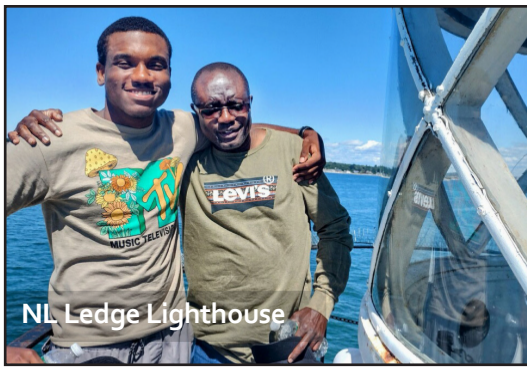
Safety first. *Photos, above:* Stonington Steel remade the deteriorated foundation railing to match an earlier design. Working out in the Race is demanding. Installing the railing in August will cost \$25,000.



Local Friendly Authentic

Open Thursday, Friday & Sunday, 1-5 PM, & Saturdays from 10 AM to 5 PM

Custom House Maritime Museum - 150 Bank Street - New London - Connecticut - *Telling the stories of New London's Waterfront.*



NL Ledge Lighthouse



NL Harbor Lighthouse



JIBBOOM Club #1 - 3rd Tues. of the month



Open Mic - last Sundays of the month



Our MUSEUM SHOP offers all kinds of unique gifts, books & toys. Visit the shop whenever the museum is open! NLMS members always receive 10% off.



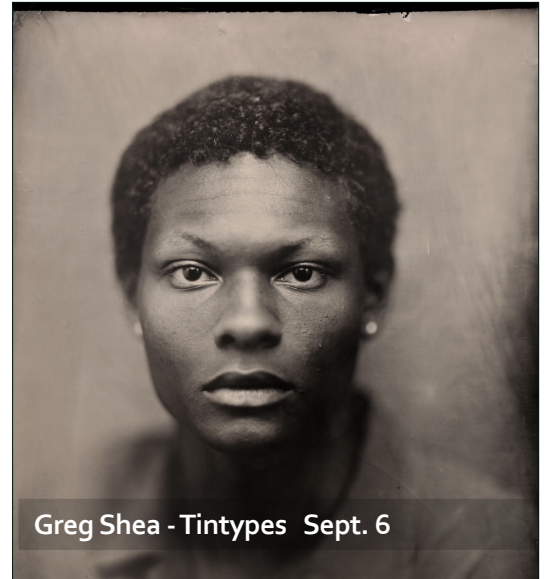
late-summer highlights - for full listings, go to nlmaritimesociety.org

- Tours to climb **HARBOR LIGHTHOUSE** run *year-round*. The views at the top are spectacular! We meet at the lighthouse, then climb 116 steps to the lantern room – all the while learning about the 261-year history of Harbor Light, the oldest and the tallest lighthouse on Long Island Sound. Sign up online at <https://bpt.me/6299893> or send an email to schedule your tour: nlmaritimedirector@gmail.com
- Explore inside **LEDGE LIGHT** tours take place August into September. Take a 15-minute boat ride from downtown New London to reach the lighthouse in the middle of the harbor. Explore the light for about one hour before returning home. See dates and register at brownpapertickets.com/event/6680492.
- Tintype portraits by Greg Shea, **Saturday Sept. 6, 10am - 5 pm**. Artist Greg Shea will create your original tintype portrait. Book your appointment at: <https://tintypes.brownpapertickets.com>.
- **Classical Trio - Linda Hinz & friends, Sept. 20, 4 PM**. Pianist Linda Hinz performs a classical music program with her trio. Go to nlmaritimesociety.org for ticket details.
- **Open Mic at the Museum** meets from 6-9 PM the **last Sunday of the month**. Share your original music, poetry, prose, stand-up, or just say what's on your mind. Open Mic welcomes performers of all kinds. Perform, or just enjoy. By donation. **August 31, September 28, October 26.**
- **JIBBOOM CLUB #1** meets the **3rd Tuesday of the month** at 1:30 PM. Join us for a talk, good company, coffee & cookies. Sponsored by the Maco Family Fund, the gatherings are FREE and open to all. **August 26 (4th Tues.), Sept. 16, Oct. 21.**



Be the first to know - sign up for weekly email new blasts: nlmaritimedirector@gmail.com

The Custom House Maritime Museum - your local, independent, community museum - open year-round - telling the stories of New London's waterfront!



Greg Shea - Tintypes Sept. 6

original tintype portraits – book yours Sept. 6

Schedule your appointment with award-winning Connecticut artist & photographer, **Greg Shea** on **Saturday, September 6th from 10 am-5 pm**, when Greg will be making original tintype portraits at the Custom House. Tintypes are one-of-a-kind, hand-made original photographic images created from pure silver on black lacquered metal plates. Greg will be using the wet plate collodion process, invented in England by Frederick Scott Archer in 1851. With proper care, the plates will last hundreds of years. This event is designed to compliment Lisa Kereshi's vintage tintype exhibition now on view at the Custom House. Sept. 6 is also NL's CT Maritime Heritage Festival.

If you would like to reserve a session to have your portrait made in this historic art form, sign up online at <https://tintypes.brownpapertickets.com/>. A portion of the proceeds will be donated to the museum. Please plan approximately 20 minutes for your session. Tintypes can be picked up at the museum about a week after the event. Edited digital scans will be made available to sitters free of charge, for their personal non-commercial use. See Greg's work at www.gregsheacreations.com.

Phase 1 Roof Replacement at the Custom House has been delayed due to changes in restoration-grant availability in 2025.

I'M JOINING THE NEW LONDON MARITIME SOCIETY!

Name _____ phone _____ e-mail _____

Street _____ City _____ State _____ Zip _____

Individual \$35___ Family \$50___ Contributor \$100___ Sponsor \$250___ Patron \$1,000___ Sign-up date _____

Cash___ Check___ ~ please make payment to New London Maritime Society Visa___ Master Card___ AmEx___

Number _____ Exp. date _____ Security code _____

Benefits of membership include *free* admission, invitations to special events, discounts, and a newsletter.

New London Maritime Society's mission is to protect, preserve, & celebrate New London's U.S. Custom House, three area lighthouses, and Long Island Sound, and to interpret the rich maritime life & history of the port of New London and the surrounding region through museum exhibitions, educational programs, and preservation initiatives. Learn more about us at nlmaritimesociety.org.

New London Maritime Society - Custom House Maritime Museum, 150 Bank Street, New London, Connecticut 06320 860.447.2501

N.L.M.S.

on view through Oct. 2025



Small Wonders: Antique Miniature & Children's Sewing Machines

from the collection of John P. Desjardins

Invented in France in 1829 -- a mere four years before New London's Custom House was built -- the sewing machine revolutionized how clothing was made.

Our new Community Cabinet exhibition, **Small Wonders**, includes the Dinsmore, pictured above. Made in Salem, Massachusetts in the early 1900s, it was used on boats to repair sails.



Visite inside Ledge Lighthouse

For the first time in two years, we're offering tours to Ledge Light. Take a 15-minute boat ride from downtown New London to reach the lighthouse in the middle of the harbor. Explore the light for about one hour -- right into the lantern room. The views from the top are awesome. Sign up online: <https://ledgelight2025.brownpapertickets.com/>.

New London Ledge was the last remaining manned lighthouse on Long Island Sound when it was finally destaffed in 1987. The automation process began in 1984, when the Fresnel lens was dismantled, removed from the lantern room, and replaced by a newer model. The original lens is reinstalled at the Custom House. In the crew's log, on the last night before the automated light system was installed, the unknown author, a Coast Guard officer, wrote the following: *Rock of slow torture. Ernie's domain. Hell on earth -- may New London Ledge's light shine on forever because I'm through. I will watch it from afar while drinking a brew.*



cheers to our sponsors: Anthony & Elizabeth Enders Fund - Charter Oak Credit Union - Andy Champagne - Chelsea Groton Foundation - City of New London - Community Foundation of Eastern CT - Elevate+ - Frank Loomis Palmer Fund, Bank of America, N.A., Trustee - Kozmik Music Services - Ludwick Family Foundation - Maco Family Fund - Louise Novitch - Robinson+Cole - Veolia/NL Water Authority. Thank you!

New London Maritime Society

Custom House Maritime Museum

150 Bank Street, New London, Connecticut 06320

nlmaritimesociety.org
local friendly authentic

