

# custom house MARITIMES AUTUMN 2022



*Open Mic at the Museum* meets from 6-9 PM on the last Sunday of the month at the beautiful Custom House Maritime Museum. Co-hosted by Kenny "Doc" Frazier, *above*, and Christina Corcoran, our monthly open mic welcomes music, poetry, prose, stand-up --or just say what is on your mind. Bring you instruments, perform or just sit. back and enjoy!

## Looking Forward to Winter Opportunities

from the president

How can we top our amazing Lighthouse Summer?

Summer was packed with lighthouse tours, museum events, a film premiere on Fishers Island, and even a live Puppet Theater. I am reflecting on all the new friends I met and the amazing adventures I experienced helping to host tours to our three lighthouses as well as a special trip to Little Gull Light! Our director Susan Tamulevich never stops exploring new ideas to keep our Maritime Museum vibrant and alive in the New London community. It is sad to see the end of the most exciting summer at the New London Maritime Museum I have ever experienced since I became a part of the Custom House family six years ago.

Now I'm looking towards Winter and the December 18 Art Opening - Open House for our *New London Local History & Landmarks* program for the Third Grade. Our program is fun for the students but also satisfies the Connecticut Core Standards for Grade Three Social Studies. Two years ago we were able to re-invent our program to adapt to the COVID restrictions. We went all out. Jody Barthel handed over the reins and we developed a wonderful virtual field trip program. A talented videographer followed me through the local landmarks as I shared the exciting history of our beautiful city.

Last spring we were lucky enough to sneak in one live field trip to Fort Trumbull and a visit on board the Coast Guard training cutter Eagle with Mr. Covino's class from Harbor Elementary School. I was thrilled to hear, 'Miss C.! We finally get to see you in person!' from eager students jumping out of their seats on the yellow school bus.

We are pleased to announce the continuation of our program for the fourteenth year with Harbor, Nathan Hale, and Winthrop elementary schools all participating. We are incorporating our virtual classroom lessons into in-person visits to the schools, culminating in in-person field trips to Fort Trumbull, a drive through historic New London to the Custom House Maritime Museum, Nathan Hale Schoolhouse, a walk along the New London waterfront to the Soldiers Monument and Whale Tail.

Last year the students were engaged and curious throughout every virtual lesson. The participation of the teachers was phenomenal. I could not have anticipated the students' eagerness. This year's program will be even better thanks to a grant from the Community Foundation of Eastern Connecticut, Elizabeth Enders, and the support of New London's vibrant community. Stay Tuned.

-Christina Corcoran, NLMS president

Christina Corcoran joined the Custom House as a volunteer in 2017. With a love of New London and masters degree in Humanities, she quickly shown as a docent and enthusiastic lighthouse booster. In 2019, Christina founded *Open Mic at the Museum*. When COVID hit, she took on teaching our 3rd-grade *Local-History & Landmarks* program. To bring more students to the museum, she created the *John Michael Corcoran Museum Day Fund* -- named for her father -- providing free admission for NL students and their families. One year ago, Christina started Open Mic at the Museum and she also became NLMS president -- we are so lucky to have her!. Christina infuses NLMS with energy and fun.



Lighthouse Summer was a blast. *Photo top:* in July, our Race Rock Fundraiser and film premiere brought a crowd of 300 to the Fishers Island movie theater. While on the island we stopped by the *Lighthouse Works* gallery; *middle:* a Veolia / NL Water Authority grant allowed us to bring over 300 NL children and their families to visit inside both Ledge and Harbor Lighthouses; *bottom:* We teach about lighthouses every day at the museum and in our 3rd-grade *NL Local-History & Landmarks* program.

# from the Frank L. McGuire Library: New London Crew Lists: 1818-1821



Some of the most interesting and valuable items in the library at the New London Custom House are the New London Crew Lists, 1818-1821, a manuscript book that records the vessels that sailed from the Port of New London for foreign ports from January 7, 1818 to December 25, 1821. Each page records such information as the "rig" (sloop, brig, schooner, etc.), name of vessel, name of master, destination, date and list of crew. The documents are signed by Thomas H. Cushing (1755-1822), Customs Collector in New London from 1815 to 1822.

There are 122 trips recorded. In addition, there are a number of unbound papers that appear to be duplicate crew lists and a few documents that record the return date of the vessels as well as some loose papers concerning the vessel Julius Caesar, that went to Desolation Island in 1853. Thirty-three of the trips are whaling voyages.

What makes this manuscript book particularly valuable is that the names of the crew members from these whaling voyages are not recorded in the comprehensive WhalingHistory.org, the database that brings together the known documentation from the whaling industry including names of vessels, masters, crew lists, location of log, name of repository, etc, mostly for American ships but including British, Scottish and French. Similarly, the information from the New London Crew Lists, 1818-1821 appears to be the only existing record of the names of the vessels, and their crew lists, that sailed from New London during those four years.

All of our resources, including the New London Crew List, 1818-1821, are available to researchers in our library, by appointment. ■ - Laurie M. Deredita, Librarian

*In December the New London Maritime Society will mount an exhibition of some of the photographs from the Small Photograph Collection in the Custom House. It will coincide with a permanent digital exhibition that will be accessible online.*



12.15 HOLIDAY CELEBRATION

## AUTUMN 2022 highlights - for full listings, go to [nlmaritimesociety.org](http://nlmaritimesociety.org)

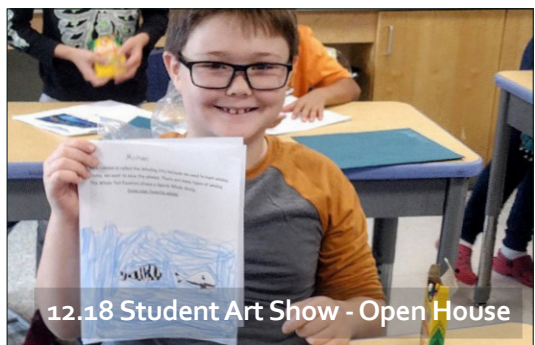
- Tours to climb **HARBOR LIGHTHOUSE** run year-round. The views at the top are spectacular! We meet at the lighthouse, then climb 116 steps to the lantern room – all the while learning about the 261-year history of Harbor Light, the oldest and the tallest lighthouse on Long Island Sound. [brownpapertickets.com/event/5127942](http://brownpapertickets.com/event/5127942).

- **December 15, 4--5 PM - 2022. HOLIDAY CELEBRATION** takes place Thursday. Join us to toast both the end of our *Year of the Lighthouse* and look forward to the year ahead. It's an in-person party at the Custom House. *There's a lot to celebrate!*

- **December 18 from 11--5. STUDENT ART SHOW & OPEN HOUSE.** Refreshments. Art from Harbor, Winthrop, and Nathan Hale third grade students in the Local History & Landmarks Program. Learn more about the program!

- **Open Mic at the Museum**, meets from 6-9 PM the last Sunday of the month, *but we're skipping December: November 27, January 29, February 26*. Share your original music, poetry, prose, stand-up, or just say what is on your mind. OpenMic welcomes performers of all kinds. Perform, or just enjoy. By donation.

- **JIBBOOM CLUB #1**, meets the 3rd Tuesday of the month at 1:30 PM. *The last JIB-BOOM of the season took place on November 15. We had a terrific season!* Join us again in March for a talk, good company, coffee & cookies. Sponsored by the Maco Family Fund, the gatherings are FREE and open to all.



12.18 Student Art Show - Open House



NLMS volunteers - the Hambeys

**VOLUNTEER AT THE CUSTOM HOUSE!** Please consider volunteering with us! We know our members have just the talents & skills we need. Come on, join with a friend & bring your coffee. We're looking for docents, lighthouse lovers, cleaners, fixers, people with construction knowledge, someone to distribute posters! Want to be in a parade? -- we need you, too! Email: [nlmaritimedirector@gmail.com](mailto:nlmaritimedirector@gmail.com)

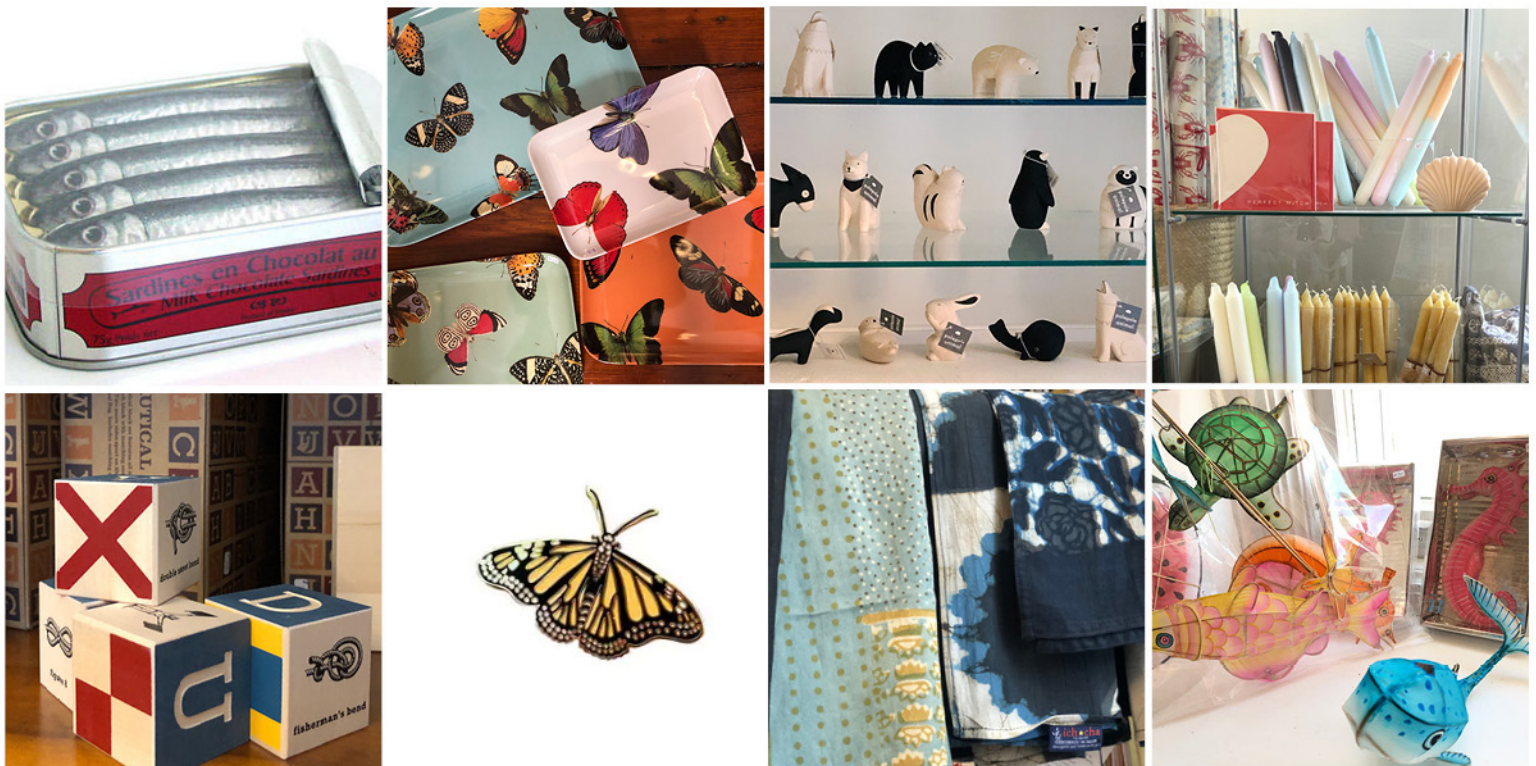
Be the first to know - sign up for weekly email new blasts: [nlmaritimedirector@gmail.com](mailto:nlmaritimedirector@gmail.com)

# 2022 – the Year of the Lighthouse

Tours to Race, Ledge, Harbor & Little Gull - a film premiere - a puppet play - we even washed the lighthouse!

We can't stop thinking about the whirlwind that was *Lighthouse Summer*. Here are some staggering statistics:

- **New London Harbor Light:** We completed landscaping at Harbor Light this summer with a \$60,000 state *Good-to-Great* grant; 101 people toured the lighthouse - 32 were NL students + family funded by **Veolia/NL Water Authority**. A bench was donated for **Marie Elena Noawk**. We washed HL in September. A \$10,000 donation from **Louise Novitch** will allow us to finish the entrance.
- **Race Rock:** Architecture firm **Modern Ruins** released their final building assessment/preservation plan in June; July had a film premiere of *The History of Race Rock*, with 300 attending on Fishers Island; we raised \$15,000 in donations so far. Eighteen guests toured inside Race Rock Lighthouse. NLMS received \$100,000 for preservation repairs from the **Ludwick Family Foundation**.
- **New London Ledge Light: Ledge Light Foundation**, which has overseen repairs since 1987, received \$100,000 from the state **Port Authority**. NLMS brought 256 people to visit inside the lighthouse - among these 51 were NL students + family with \$5 tickets funded by **Veolia/NL Water Authority**. Cracks may indicate structural decay; In November, **NL Maritime Society** launched a Go-Fund-Me campaign to raise \$10,000 for an architectural assessment/restoration plan for Ledge lighthouse.
- With the **Little Gull Foundation**, NLMS brought the first public tours -- 54 people -- to visit **Little Gull Island and Lighthouse**.
- NLMS and 100 friends toasted **Alwyn Christie** and **Ned Hammond** at a fundraiser at NL's **Lighthouse Inn** in September.
- NLMS brought **Arm-of-the-Sea Theater's** lighthouse play *Keep That Lamp Trimmed N' Burning* to **Hygienic Park** for a free family performance in September as part of the **CT Maritime Heritage Festival**, with a grant from the **NL Cultural District**.



Visit the Custom House Museum SHOP! Your purchase benefits our education programs. You don't need a ticket to come in! Photo, clockwise from upper left: milk chocolate sardines in a tin, butterfly trays, wooden animals, hand-dipped & beeswax candles, silk & bamboo mobiles & ornaments, silk and cotton scarves, butterfly pin, wood maritime alphabet blocks.

 I'M JOINING THE NEW LONDON MARITIME SOCIETY! 

Name \_\_\_\_\_ phone \_\_\_\_\_ e-mail \_\_\_\_\_

Street \_\_\_\_\_ City \_\_\_\_\_ State \_\_\_\_\_ Zip \_\_\_\_\_

Individual \$35 \_\_\_ Family \$50 \_\_\_ Contributor \$100 \_\_\_ Sponsor \$250 \_\_\_ Patron \$1,000 \_\_\_ Sign-up date \_\_\_\_\_

Cash \_\_\_ Check \_\_\_ ~ please make payment to New London Maritime Society Visa \_\_\_ Master Card \_\_\_ AmEx \_\_\_

Number \_\_\_\_\_ Exp. date \_\_\_\_\_ Security code \_\_\_\_\_

Benefits of membership include *free* admission, invitations to special events, discounts, and a newsletter.

*New London Maritime Society's mission is to protect, preserve, & celebrate New London's U.S. Custom House, three area lighthouses, and Long Island Sound, and to interpret the rich maritime life & history of the port of New London and the surrounding region through museum exhibitions, educational programs, and preservation initiatives. Learn more about us at [nlmaritimesociety.org](http://nlmaritimesociety.org).*

New London Maritime Society - Custom House Maritime Museum, 150 Bank Street, New London, Connecticut 06320 860.447.2501

NLMS is dedicated to lighthouse education, access, and preservation. The Maritime Society owns New London Harbor (Pequot) Lighthouse (1760), Race Rock Light (1878), and New London Ledge Light (1909) —all active aids to navigation. Together these three historic beacons lead ships from the Atlantic Ocean to New London Harbor. NLMS teaches about the lighthouses every day at the Custom House Maritime Museum and in our in-school programs. ■

I'm donating \$ \_\_\_\_\_ to the Custom House. \_\_\_\_\_ Contact me about leaving a legacy.



## New London Maritime Society

Christina Corcoran, President	Honorary Trustees
John Desjardins, Vice President	Andrew Blacker
Alan Lyon, Treasurer	Lonnie Braxton II, Esq.
Regan Morse, Secretary*	Capt. Edward Cubanski, USCG ret.
Adrianna Bates	Nick Hanke
Lloyd Beahy	Nick Korstad
Russell DeMarco	William H. LaRoue, Ph.D.
Steve Hambey	Carolyn Leuze
Mark Seth Lender	Morgan McGinley
Joe Maco	Margaret Palmer
Matthew Male	Robert A. Pittaway
Ed Uditis	Richard Salews
Ted Web	Greg Stone
	George C. White

Head Librarian, Laurie Deredita

Librarian: Brian Rogers

Collections Manager: Denise Davies

Intern: Sebastien Jean Michel

Executive Director: Susan Tamulevich

**Docents:** Neale Belgrade, Christina Corcoran, Dick Fraser, Shiloh Steve & Susan Hambey, Lea Jewitt, Regan Morse, Ann Marie Perry, Henry Savin, Kate Wells, David Williams.

**Tour Leaders:** Estlin Davies, Stan Solinsky, Bob Tellier.



Photo: our 'new' SLIPOVA sailor suit in the Kids Ahoy exhibition.

Go to [nlmaritimesociety.org](http://nlmaritimesociety.org) to keep up with what's up!



We thank our partners & sponsors - ARPA - Bodenwein Foundation - Charter Oak Credit Union - Chelsea Groton Foundation - Community Foundation of Eastern CT - CT Humanities - CT Department of Economic and Community Development, CT Office of the Arts - Eleven+ - Friends of Marie Elena Noack - Louise Novitch - John Michael Corcoran Museum Day Fund - Maco Family Fund - New London Cultural District - Frank Loomis Palmer Fund - Robinson+Cole - State of CT - SVOG U.S. Small Business Administration - Veolia / NL Water Authority.

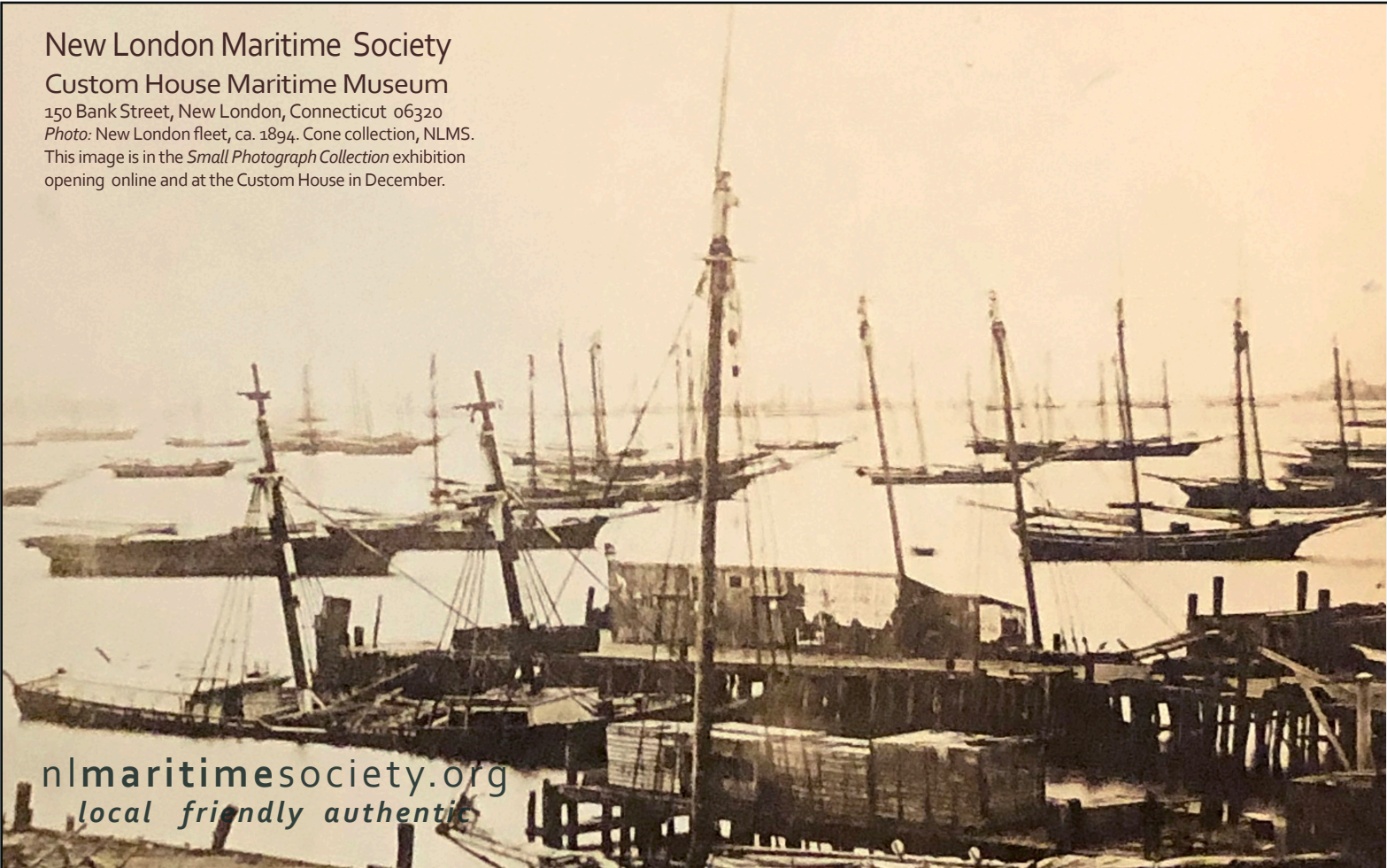
## New London Maritime Society

### Custom House Maritime Museum

150 Bank Street, New London, Connecticut 06320

Photo: New London fleet, ca. 1894. Cone collection, NLMS.

This image is in the *Small Photograph Collection* exhibition opening online and at the Custom House in December.



[nlmaritimesociety.org](http://nlmaritimesociety.org)  
local friendly authentic